



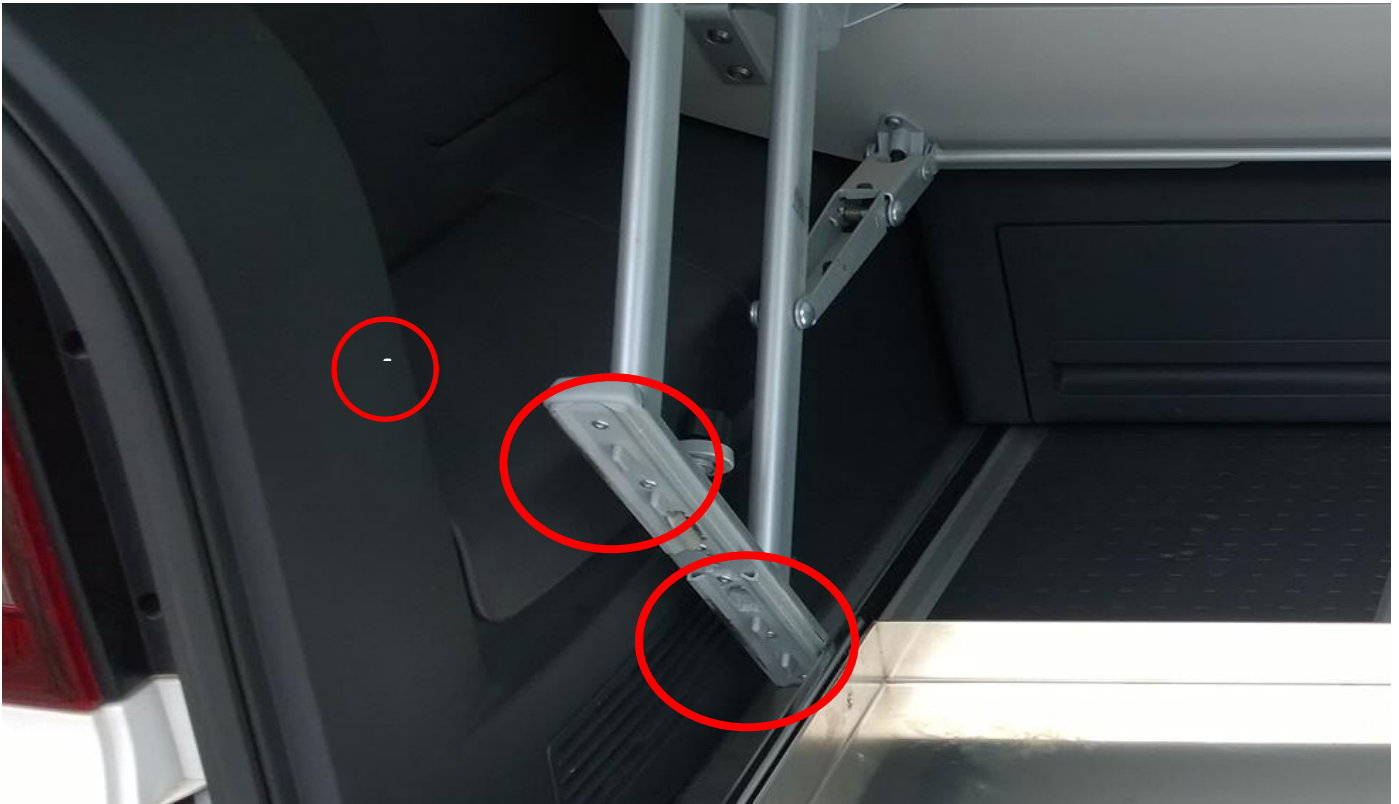
## Installation instructions Beach:

Rear pull-out for the VW T5-T6.1 California Beach and Multivan  
Loosen the VW Multiflexboard and then tip it off.



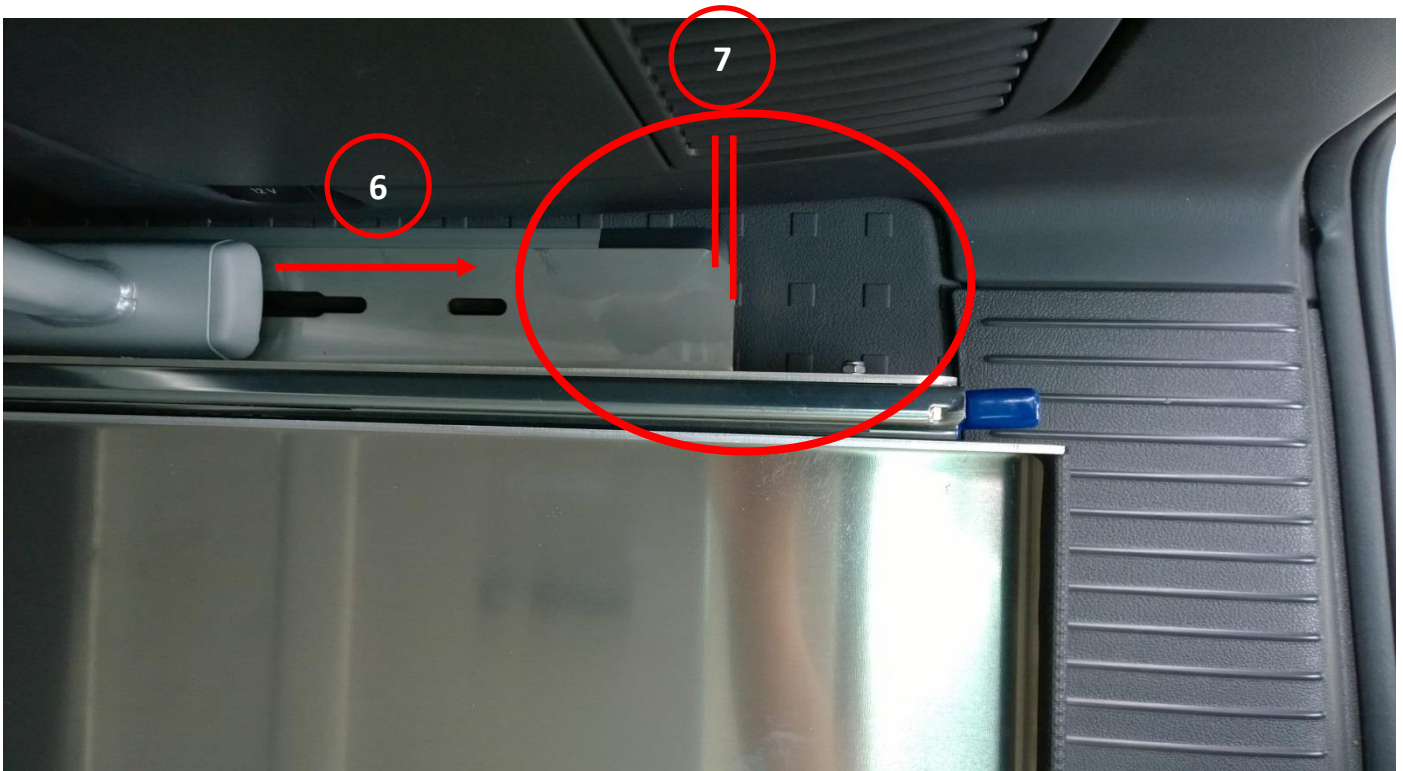
Now slide the slide-out under the VW Multiflexboard.





The knobs on the Multiflexboard must be placed in the slots provided on the rear extension.





Bring the slide-out into this position (may look different due to technical changes). It is important to attach the original VW fasteners to the rails.



8.1

8.2

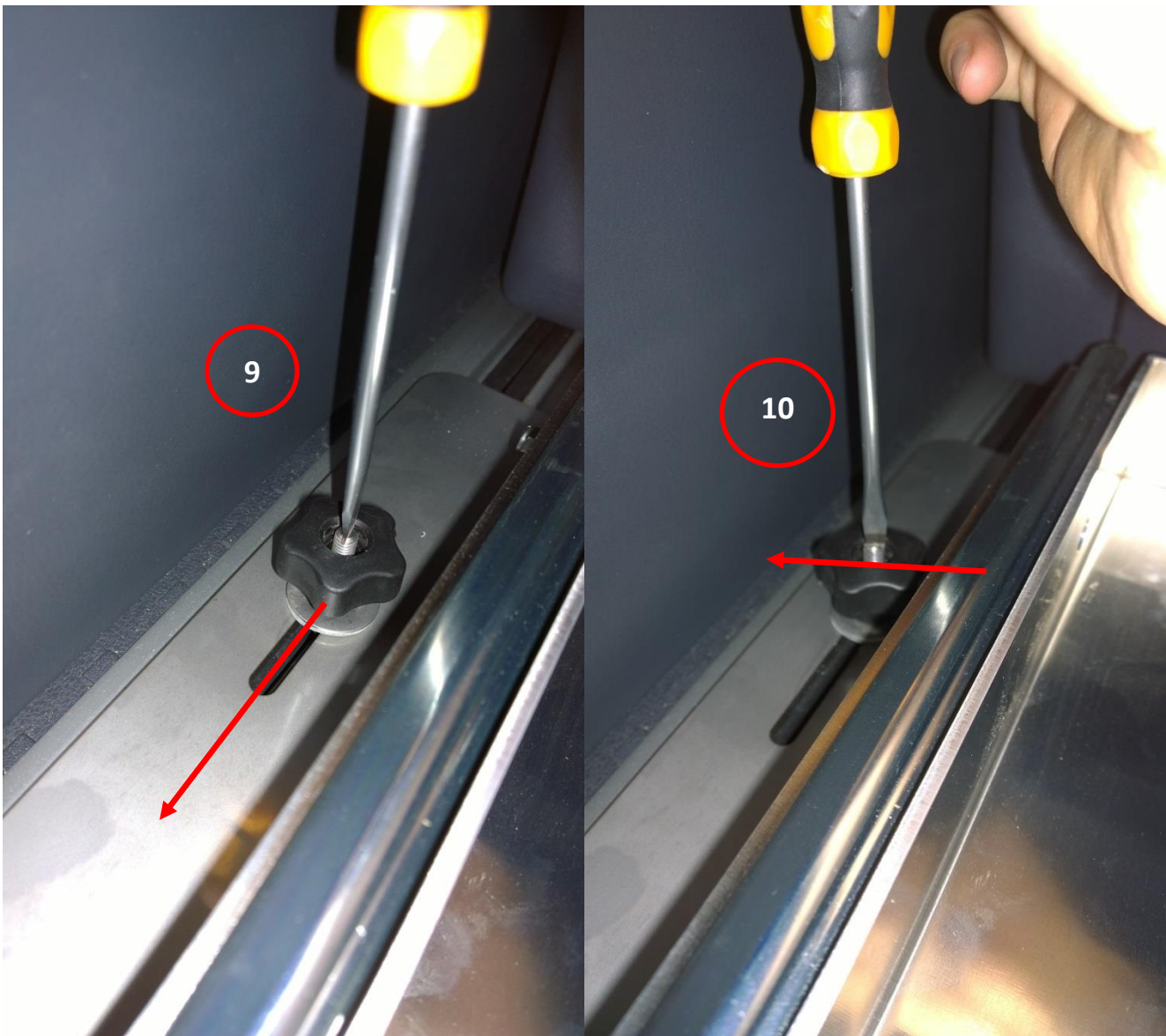
8.3



**Important:**

In order to secure the slide-out firmly, the cap (8.1) of the original lock (8.2) must be opened and the retaining ring (8.3) must be removed. This allows the fastener to be turned completely sideways again. This is the only way to ensure proper functioning.

When in the right position, turn the lock as tightly as possible, the end position is parallel to the multiflex board. Tighten the black handles firmly.



Place the additional fasteners in the rear groove. Turn the locks 90 degrees and pull them up, they now lock in the rail system.

Hand tighten by turning the star handle. Attention, the T-piece must grip in the groove, not just rubber!



## Assembly instructions:

california-camping.de assumes no responsibility for improper installation. If you are unsure, please give us a call. Telefon: 0 81 66 - 69 49 818

## Important

- The load must be adequately secured.
- The slide-out must be locked while driving.
- Care must be taken to distribute the load and thus the weight as evenly as possible on the slide-out.
- It is recommended to check all fastenings from time to time.

The slide-out can only be "moved" when the red locking levers are pressed.

Shake the whole Multiflexboard and then tighten the fastenings at the front and back (4 pieces).

The rear slide - out can only be used when it is sufficiently tightened.

Check the fastening after the journey and tighten again if necessary.